

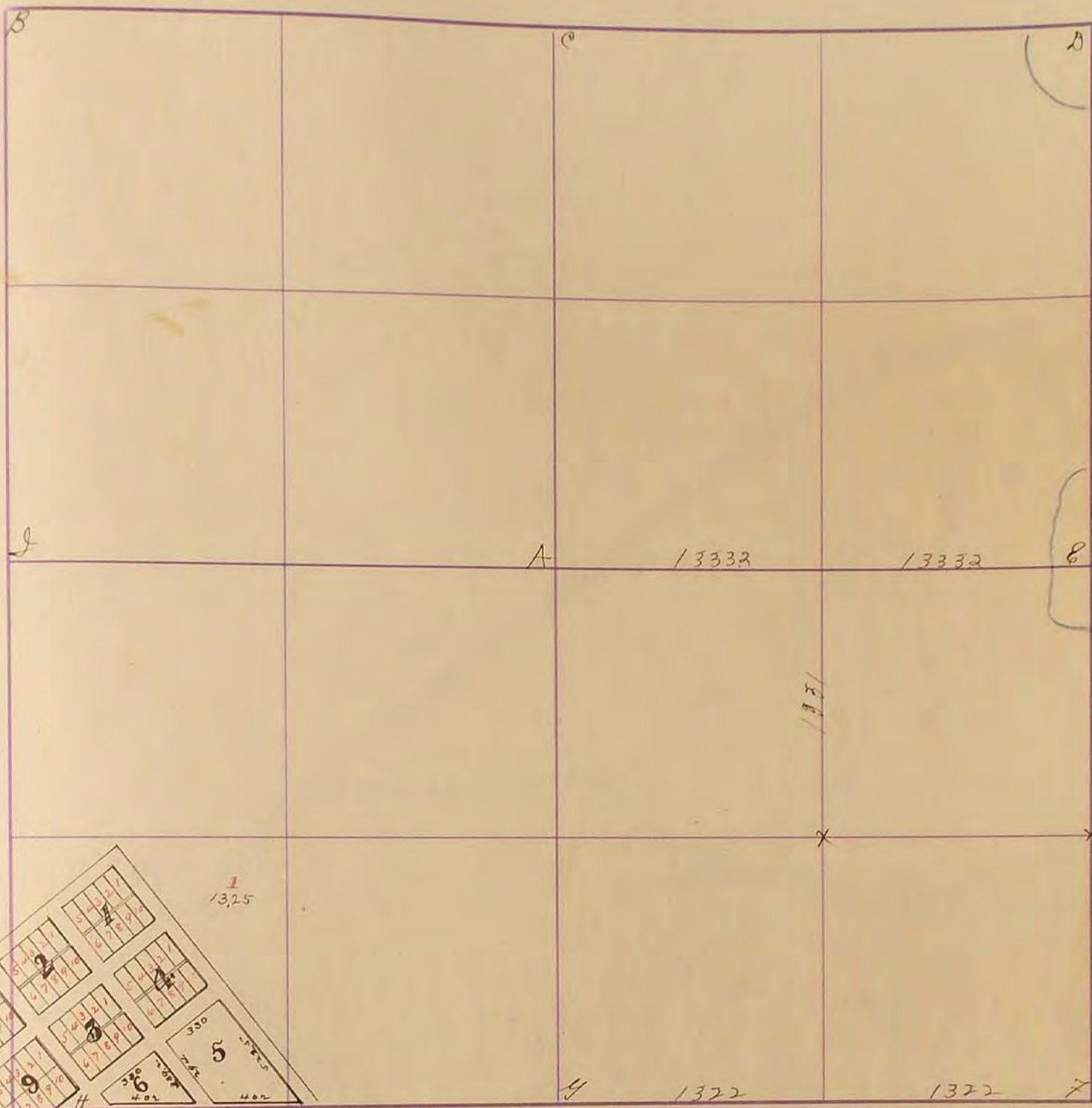
MURRAY COUNTY.

Section **27**

Township **106**

Range **40**

10798 McGill-Warner Co., Blank Book Manufacturers, St. Paul.



PEHRSON'S Add. to Avoca.

Apr. 25 - 1902

A. Stone 3X8X14 + 4 Pits

B.

C. Stone in grade on line with fence on north

D.

E. Stone 4X6X16 WC. 99, S. Stone 10X10X20

F. " " " " South of Grade

G. " " " " 25' south of fence corner.

H. Mound + stake

I. " " " "

J. Stones

Found gov. stake at C. + E. N. I.

Stakes established by previous survey G.

Established A, E, F.

"F" Concrete Stone: R.P. Tack in Cor fence post N.W. 42²'

R.P. Edge of Steel Cor. post N.E. 41²'

"G" Concrete Stone: R.P. Tack in Cor fence post North 33⁶'

R.P. Edge of Steel post N.W. 46²'

"H" Brick + Hub in Posture: R.P. Tack in Gate post West 55¹'

R.P. Edge of 2nd Steel post South of Gate post 48⁵'

~~"G" Located Conc. Monument 15" below gravel. Placed steel pin above monument.
R.P. N40. Fence post N. 81.25' on line; R.P. Top Steel fence post painted red 64.50'
"F" Located Conc. Monument 10" below gravel mat. Placed steel pin above monument.
R.P. N40, P.P. N45 45.07'; R.P. N40. Fence post N. 85.70' (April 1904)~~

"G" Placed Conc. Monu. 2" below Gravel surface.
R.P. Burr on Culv. End N.E. 89.57, 2x2 hub with nail 100' N. in fence
line + 100' south in fence line. 10, 75

"F" Placed 18" Conc. Monu. 3" below Gravel surface.

R.P. N4C in P.P. N.E. 58.05, N4C in Brace Pole S.E. 78.30

Nails in twp Road 100' + 200' North + South. 10-75

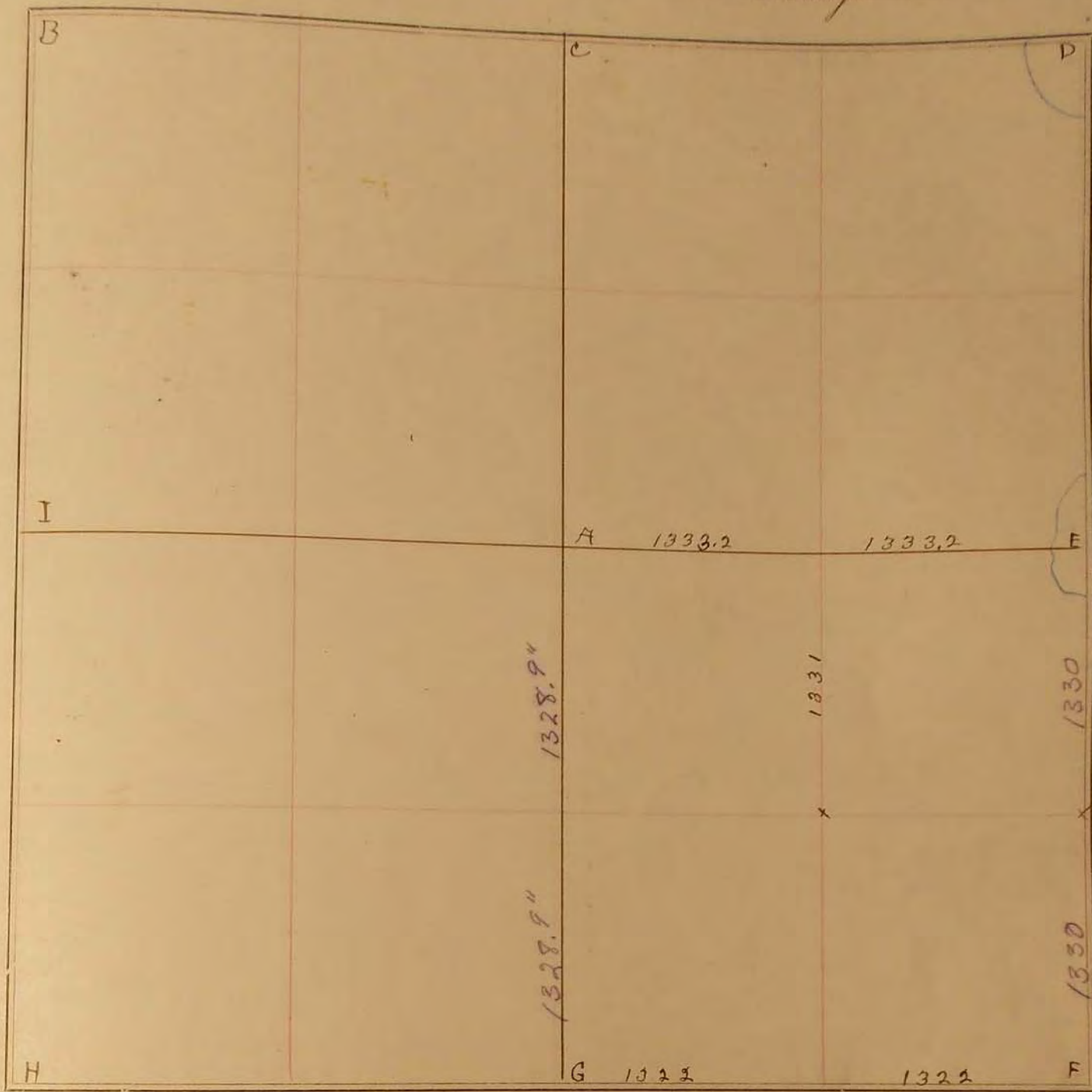
26
27
28
29
30
31
32
33
34
35
36

SURVEY No. 102

Section 27

Town 106

Range 40



FIELD NOTES.

April, 25, 1902.

A Stone 3x3x14 + 4 pits

B Stone in grade on line with fence on north

C Stone 4x6x16 w. e. 99's stone 10x10x20

D " " " south of grade

E " 25' south of fence corner.

F mound + stake.

G " " "

H stones

Found gov. stakes at C + E + H + I

Stakes established by previous survey G

Established A, E, F.